

Please see below for a bumper selection of Japan Foundation activities as we start to pick up pace in the New Year.

**Arts & Culture**

**2010 Japan Foundation Touring Film Programme**

Touring to five venues throughout February and March, *Girls on Film* is a film programme looking at contemporary Japanese cinema made about and, in some cases, by women.

9 to 17 February - ICA, London  
22 February to 4 March - Showroom Workstation, Sheffield  
5 to 9 March - Queen's Film Theatre, Belfast  
10 to 14 March - Filmhouse, Edinburgh  
13 to 21 March - Arnolfini, Bristol

:: [Click here](#) for more information.



**Kamome Diner** (Kamome Shokudo) Dir: Naoko Ogigami, 2006  
**ASYLE** (Park and Love Hotel) Dir: Izuru Kumasaka, 2007  
**Fourteen** (Juyon-sai) Dir: Hiromasa Hirose, 2007



**German plus Rain** (German+ Ame) Dir: Satoko Yokohama, 2007  
**How to Become Myself** (Ashita no Watashi no Tsukirikata) Dir: Jun Ichikawa, 2007  
**Non-ko** (Non-ko 36-sai: Kaji Tetsudai) Dir: Kazuyoshi Kumakiri, 2008

**Japanese Music and Composers Series**

We have three events coming up in the next month marking the culmination of this series.

**Sound and Musical Instruments Depicted in Ukiyo-e**

Starting a double-bill of lectures, **Prof Kiyoko Motegi** will look at the relationship between ukiyo-e and musical instruments, guiding us through the world of sound in the Edo period. Introduced by **Prof Timon Screech**.



*Children playing at a festival* by Kikukawa Eizan, c.1780, Ota Memorial Museum of Art

Date: 23 February 2010, from 6:30 pm  
Venue: The Japan Foundation London

:: [Click here](#) for more information.

**Unexpected Gems - Exploring the Sources of Japanese Sound Culture**

For the second lecture, **Prof Motegi** will discuss the sounds at the root of Japanese sound culture, including examples of sound objects from her collection. Introduced by **Dr David Hughes**.



Examples of small sound objects

Date: 24 February 2010, from 6:30 pm  
Venue: The Japan Foundation London

:: [Click here](#) for more information.

**Taishogoto - Introduction & Workshop**

Taishogoto master **Akane Suenobu** will give an introduction and demonstration of the instrument before allowing participants to try for themselves.

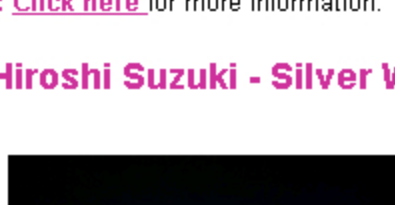


Taishogoto

Date: 1 March 2010, from 6:30 pm  
Venue: The Japan Foundation London

:: [Click here](#) for more information.

**Hiroshi Suzuki - Silver Waves**



*Dual Rivulet VIII, 2006*

The Japan Foundation is supporting this new exhibition celebrating the remarkable career of contemporary silversmith **Hiroshi Suzuki**.

Date: 8 February - 6 March 2010  
Venue: Goldsmiths' Hall, Foster Lane, London

:: [Click here](#) for more information.

**Language (JFLLC)**

**Japan Webpage Contest for Schools**

Enter the Japan Webpage Contest for Schools and win up to **£1,000** worth of prizes for your school!



**Open to:**  
Any UK primary or secondary school that is teaching Japanese or doing any kind of project related to Japan. Your school does not need to be teaching Japanese to enter.

**To enter:**  
- Make a webpage about the work that your school is doing with Japanese or Japan.  
- This can be a blog, wiki, or a page on your school's website.  
- You can enter an existing webpage or create a new webpage from scratch.  
- It can be made by just one teacher, or by teachers and students working together.

:: [Click here](#) for more information.

**Head Start 2010**



Sign up now for this free one-day course on introducing Japanese at your school, plus a Japanese language taster.

It will focus on resources, accreditation and support available from various organisations. You will also hear from teachers who have successfully introduced Japanese at their schools and you will have the chance to explore the resources in our specialist library.

Date: 17 March, from 10:00am.  
Venue: The Japan Foundation London.

:: [Click here](#) for more details.

**Talking Contemporary Japan**

This is a free course for advanced learners of Japanese.



Applications are now open for the new course, 'Getting down to business! - Language and Etiquette in Japanese Society'.

:: [Click here](#) for more information and an application form.

**Japanese Speech Contest for University Students**



The contest is open to the public and free to attend.

Please arrive in good time, as seating is limited.

Date: 27 February. Speeches start at 1:00pm.

Venue: Khalili Theatre, School of Oriental and African Studies (SOAS), University of London.

:: [Click here](#) for more details (further information will be posted on the Japan Foundation website in the coming weeks).

**Japanese Studies & Intellectual Exchange**

**Cultural Heritage? in East Asia Conference**

The Japan Foundation is co-organising this academic conference, which will also be open to the public, featuring an expert panel of speakers from across the world looking at questions relating to Cultural Heritage in China, Japan and Korea.

Date: 13 March 2010, from 9:00 am to 4:00 pm

Venue: UCL Institute of Archaeology, G6 Lecture Theatre

:: [Click here](#) for more information

**Japan Foundation Award Celebratory Lecture by Professor Arthur Stockwin: Does changing the government mean changing the system? Reflections on Japan's new politics.**



Professor Arthur Stockwin

Celebrating his receipt of The Japan Foundation Award for Japanese Studies & Intellectual Exchange, **Professor Arthur Stockwin** will give a lecture looking at the performance and implications of the new Democratic Part Government in Japan.

Date: 18 March 2010, from 6:30 pm

Venue: The Embassy of Japan, London

:: [Click here](#) for more information

JF news UK has been sent to you because you have either signed up to receive it, or shown an interest in Japan Foundation activities. If you prefer not to receive it, please follow the link below to remove your details from our e-bulletin list.

visit [www.jpff.org.uk](http://www.jpff.org.uk)

**Japan Foundation Funding**

For full details of all our funding programmes click on the following links:

:: [For Arts & Culture Programmes](#)

:: [For Language Programmes](#)

:: [For Japanese Studies and Intellectual Exchange Programmes](#)

**Japan Foundation Events in the UK**

A full list of all events in the UK organised by, or with support from the Japan Foundation can be found on our website.

**What's On**

forward this email to a friend



THE JAPAN FOUNDATION

Russell Square House  
10-12 Russell Square  
London WC1B 5EH

Email  
[info@jpf.org.uk](mailto:info@jpf.org.uk)

Telephone  
020 7436 6665

Fax  
020 7323 4888

Enquiries for The Japan Foundation London Language Centre (JFLLC):

Email  
[info.language@jpf.org.uk](mailto:info.language@jpf.org.uk)

Telephone  
020 7436 6668

Fax  
020 7323 4888